



بِسْمِ اللَّهِ الرَّحْمَنِ الرَّحِيمِ

السلام عليكم ورحمة الله وبركاته



Department of Parasitology



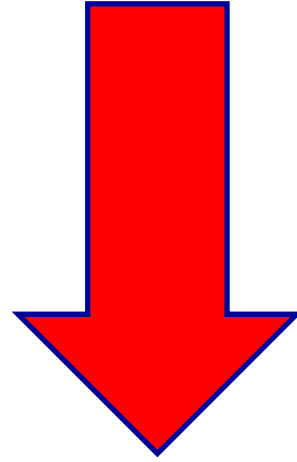
PRACTICAL SECTION OF PARASITOLOGY

6th Week

17-3-2020

TYPES OF ANTENNAE

FOR ALL

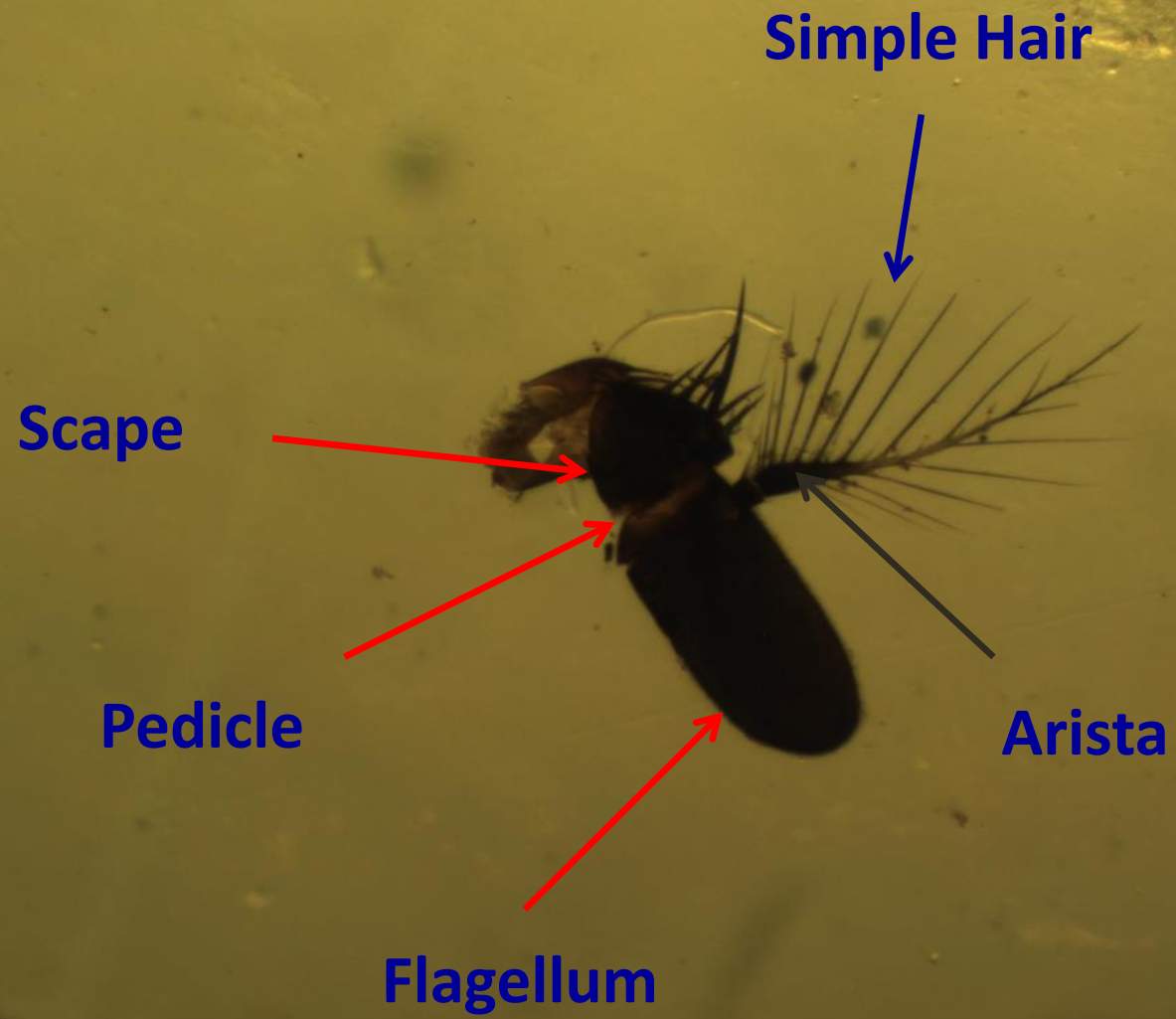


لاحظ توزيع الشعر علي الاريسـتا

1- *Musca domestica* antenna

Characterized by

The distribution of simple hair on dorsal and ventral aspect of arista from proximal end to the distal end



2-Stomoxys species antenna

Characterized by

The distribution of simple hair on dorsal aspect only of arista from proximal end to the distal end

Simple Hair



3-Glossina species antenna

Characterized by

The distribution of compound hair on dorsal aspect only of arista from proximal end to the distal end

Compound hair = **تعني** branched hair

Compound Hair



4-Sarcophaga species antenna

Characterized by

The distribution of simple hair on dorsal and ventral aspect until the middle of arista

Simple Hair



5-Wohlfahrtia species antenna

Characterized by

Bare arista , means no hair just few short
sensory hair

Bare arista



TYPES OF PROBOSCIS

6-Musca domestica mouthparts (Proboscis)

Characterized by

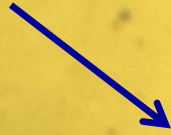
It composed of three main parts

1-Rostrum— triangle in shape

2-Haustellum (Labium)—elongated middle part,
supported by strongly chitinoid structure

3-2 fleshy Labellae

Maxillary palp



Rostrum



Haustellum



Labella



7-Stomoxys species mouthparts (Proboscis)

Characterized by

- Strong chitinated structure
- The Labium is elongated with proximal bulbous part, while the distal end carry pre-stomal teeth.

Teeth



bulbous part
انتفاخ



8-Glossina species mouthparts (Proboscis)

Characterized by

- Strong chitinated structure
- The Labium is elongated with onion shaped proximal part.
- The maxillary palps are as long as proboscis

Maxillary palp

Proboscis

Maxillary palp

Proboscis

Onion shape
شكل البصلة

CLASS: CRUSTACEA

Cyclop male

Characterized by

- Pear shaped
- Cephalothorax composed of 5 segment , carry 2 pairs of antennae, single median eye and 4 pairs of legs
- Abdomen consist of 5segment, and the last one is forked and carry 2 group of hair



eye

A micrograph showing a biological specimen, likely a larva or insect part, with a large, dark, reddish-brown mass in the center. The mass has a textured, almost crystalline appearance. It is surrounded by a lighter, granular material. A blue arrow points from the label 'eye' to the top of the mass. Another blue arrow points from the label 'Group of hair' to a thin, hair-like structure extending from the bottom of the mass. The background is a light, mottled grey.

Group of hair

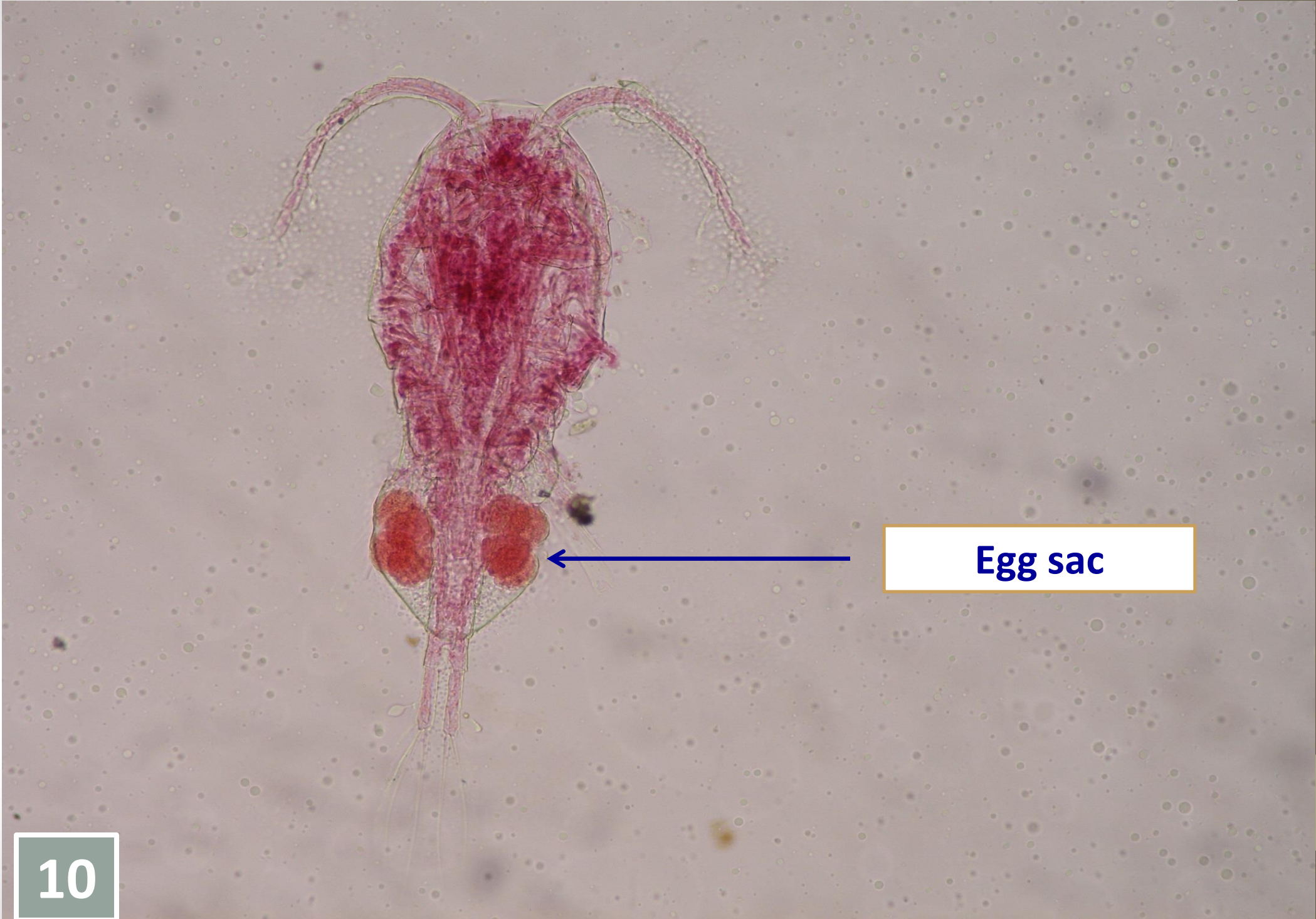
Cyclop female

Characterized by

The same for male

بالإضافة الى.....

- Abdomen consist of 4segment, Carry 2 egg sacs attached to first abdominal segment



Egg sac