

2

Hollow Block Slabs

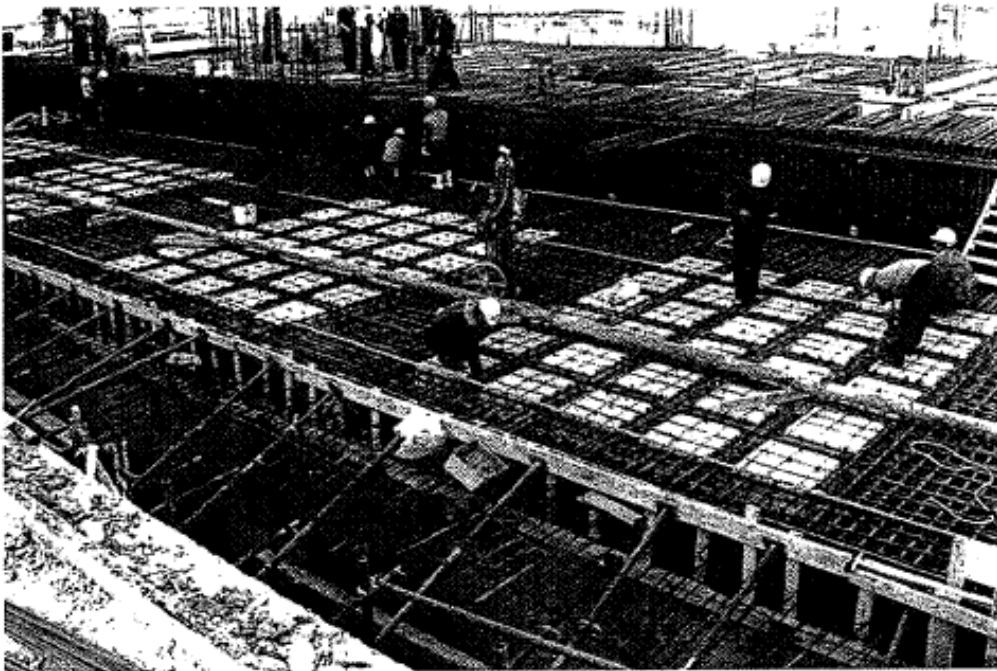


Photo 2.1 Reinforcement placement in ribbed slab during construction

2.1 Introduction

Hollow block floors are formed typically using blocks made of concrete with lightweight aggregate. The void in the blocks reduces the total weight of the slab significantly.

The main advantage of using hollow blocks is the reduction in weight by removing the part of the concrete below the neutral axis. An additional advantage is the ease of construction, especially if the floor is designed with no projected beams (*hidden beams*). Hollow block floors proved economic for spans of more than 5m with light or moderate live loads, such as hospitals, office or residential buildings. They are not suitable for structures having heavy live loads such as warehouses or parking garages.